



Model# HHG8219H20

The “HIRED HAND®” with Hydraulic Dove
21 + 9’ (30’) x 8 ½’ Gooseneck Deckover



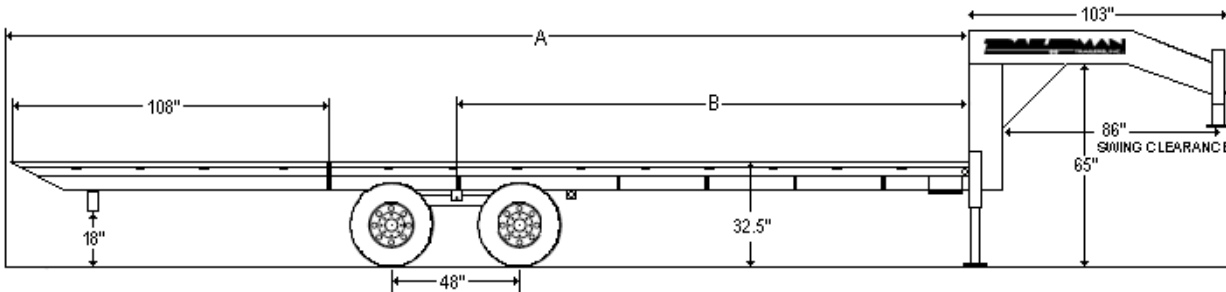
(2) 10K Elec. Axles; Oil Bath
ST235-80R-16” 10-PR Tires on Dual Wheels
2 5/16” Adj. Coupler
(2) Dual Pin SL Dropleg Jacks (24K)
9’ Hydraulic Dove; with 10K of lift; for loading
Battery w/Power Unit In Underbody Toolbox

Break-A-Way Kit
Assist Step w/Handle & Mud Flaps
L.E.D. Rubber Mounted Sealed Lights
Protected Wiring Harness
HD Safety Chains
Pierced Frame Provides Lower Deck Height

Treated 2” Wood Floor
Spare Tire/Wheel Mtd
Lockable Tool Box b/t Jacks
Stake Pockets on 16” Centers
Rub Rail 2” x 5/16”
14 Degree Loading Angle

(Ship Wt.:7,220# GAWR: 20,000# GVWR: 20,000#)

MAINFRAME: 12” 19# Beam **NECK:** 19# Beam **CROSS MEMBERS:** 3” Channel; Pierced **CENTERS:** 16”



Measurements		
Length	A	B
30	360	211
32	384	231
34	408	255
36	432	279
38	456	303
40	480	327

HIRED HAND® WITH HYDRUALIC DOVE OPTIONS	
Additional Footage up to 40’(35’+ includes Torque Tube)	Underbody Lockable Tool Box; 18 x 18 x 24”
Tongue Pull with Pintle Eye or 2 5/16” Coupler	Underbody Lockable Tool Box; 18 x 18 x 30”
12,000# Elec Axles	Underbody Lockable Tool Box; 18 x 18 x 36”
Electric-Over-Hydraulic Brakes	1/8” Diamond Plate Steel Floor
(1) 2-Speed D.L. Jacks	8’ x 6’ Deck-Over-Neck
Twin 2-Speed D.L. Jacks	2” Rough Cut Oak Floor
Twin 2-Speed Semi-Type Landing Gear w/ Swivel Foot	Winch Plate
Electric-Over-Hydraulic Jacks	Mesh In Neck or Tongue

VISIT OUR WEBSITE TO FIND AN AUTHORIZED TRAILERMAN® DEALER: www.trailertrailer.net

{Trailertrailer, Inc. reserves the right to make changes to the standard features at any time without notification. }