



The “HIRED HAND®” with Hydraulic Dove  
**Model# HHG8219H20**  
 8 ½’ Width x 21 + 9’ (30’) Length

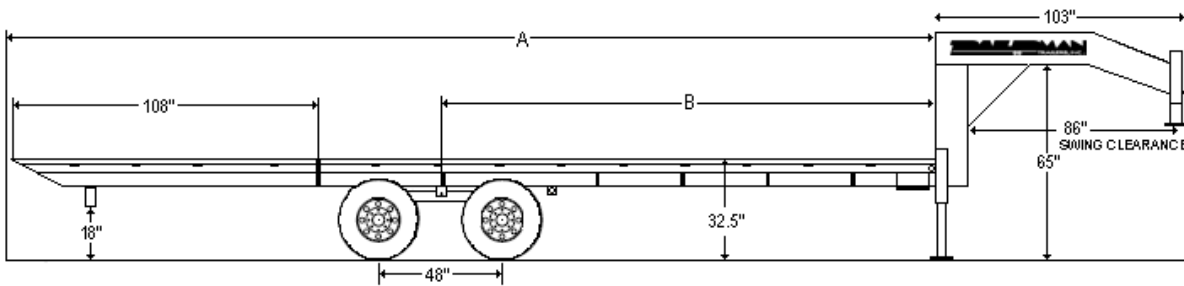


- |  |  |   |
|--|--|---|
| (2) 10K Elec. Axles; Oil Bath<br>48.5” Axle Spread<br>ST235-80R-16” 10-PR Tires on Dual Wheels<br>2 5/16” Adj. Coupler<br>(2) Dual Pin SL Dropleg Jacks (24K)<br>9’ Hydraulic Dove<br>Deep Cycle Battery w/Power Unit In Toolbox<br>2-Component Epoxy & Polyurethane Primer & Top Coat | Break-A-Way Kit<br>HD Safety Chains<br>Lockable Tool Box b/t Jacks<br>12 Volt 2-AMP A/C Charger<br>Solar Battery Maintainer<br>Wireless Remote<br>Push Button Control w/15’ Lead | Assist Step w/Handle x 2<br>2” Treated Wood Floor<br>Stake Pockets on 16” Centers 2” Rub Rail<br>Rubber Mtd. Sealed L.E.D. Lights<br>Sealed Wire Harness w/ 7-Way Light Plug<br>Pierced Frame Provides Lower Deck<br>Spare Tire/Wheel Mtd Rail<br>18.3° Loading Angle |
|--|--|---|



(Ship Wt.:7,220# GAWR: 20,000# GVWR: 20,000#)

<b>MAINFRAME:</b> 12” 19# Beam	<b>NECK:</b> 16” Pierced	<b>CROSS CENTERS:</b> 3” Channel; Pierced
<b>DECK HEIGHT:</b> Approx. 33 ½	<b>DOVE:</b> 8K #'s Lift for Loading and 4K #'s Hauling Capacity	<b>CENTERS:</b> 16”



Measurements		
Length	A	B
30	360	211
32	384	235
34	408	259
36	432	272
38	456	287
40	480	302

SOME AVAILABLE OPTIONS	
Additional Footage up to 40’	Upgrade to 215-75R-17.5” LRH 16-PR Tires
10’ Hydraulic Dove w/16.46 Degree Loading Angle	Electric-Over-Hydraulic Brakes
12,000# or 15,000# Elec Axles	Twin 2-Speed Landing Gear w/ Swivel Foot
Electric-Over-Hydraulic Jacks	Twin 2-Speed D.L. Jacks

VISIT OUR WEBSITE TO FIND AN AUTHORIZED TRAILERMAN® DEALER: [www.trailertrailer.net](http://www.trailertrailer.net)